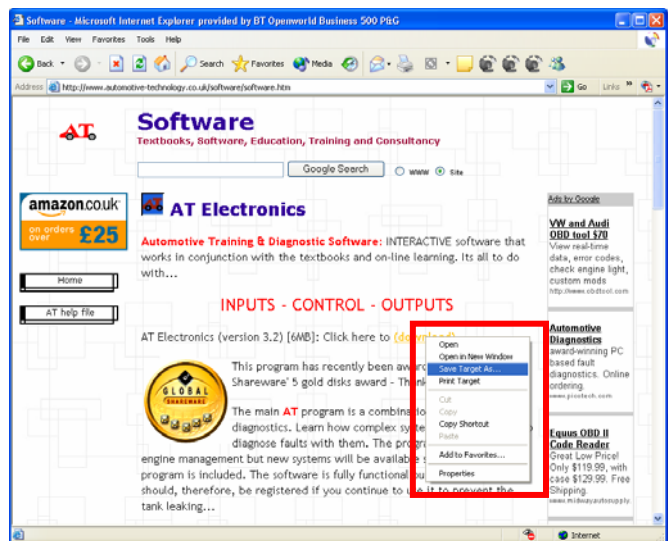


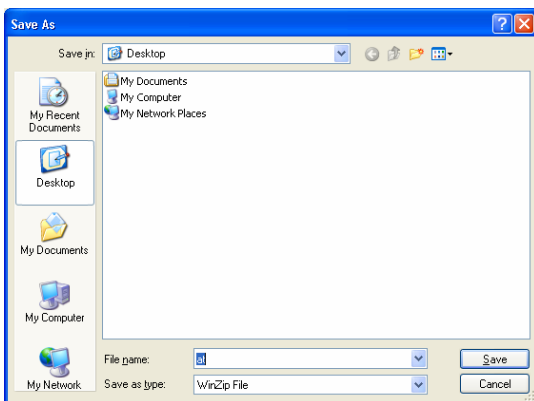
AT Electronics – download and installation instructions

If you have a CD version, jump to the next page...!

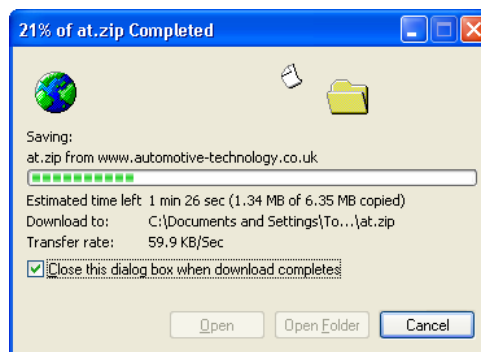
To download the software, **right click** on the link and choose **Save as...**



When the following box appears, I suggest you choose to save at.zip on your desktop so it is easy to find. This file can be deleted afterwards.



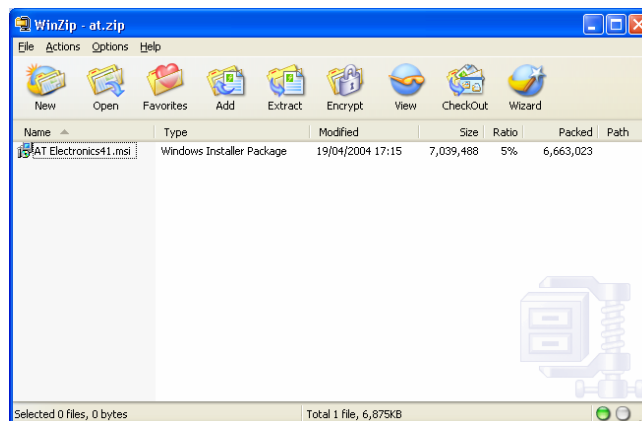
After you click **Save** the following progress box will show – and stay for a while depending on your connection speed! Close this box after download completes if necessary.



In the WinZip window (or other zip program window) you should find just one file called **AT Electronic##.msi**

This is the installation file – double click it to install...

You should now find a new file on your desktop (or wherever you chose to save the file).

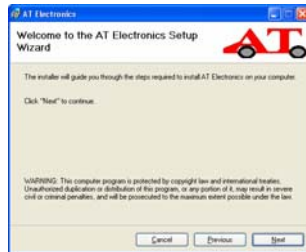


If you have the software on CD then it should autorun when you put it in the drive. If not just double click on: **AT Electronics41.msi...**

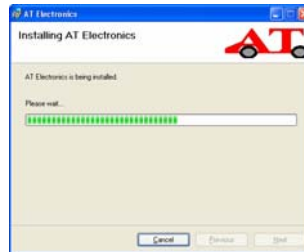
...and this box should appear. Click **Next...**



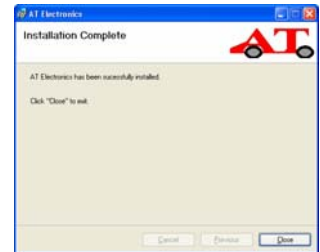
...I suggest you accept the default settings and keep clicking **Next...**



...until this progress box appears. It only takes a few minutes so relax and click **Next** when it completes and...



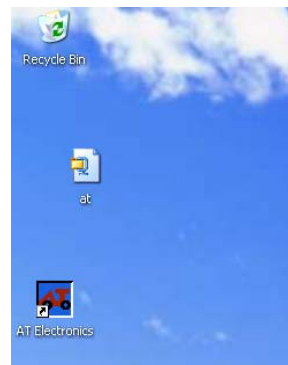
...this final box will show. Click **Close** to finish. You can also close the WinZip window



You should now find the AT Electronics icon on your desktop as shown here.

You can move or delete the at.zip file if you wish.

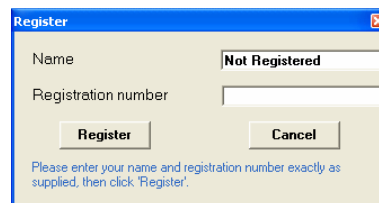
Double click the AT Electronics icon and the program will start.



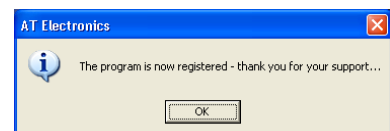
If the program is not registered the following box will appear. Click **Yes** to enter your code if you have one. Click **No** to trial the program.



Delete the 'Not registered' Name and enter your name and code exactly as supplied to you by email. Click **Register...**



...and this box will appear to say thank you! Click **OK** – if the About box appears, click **OK** on that to close it.



The main program window will now be empty as shown here. That's it, all installed and working.

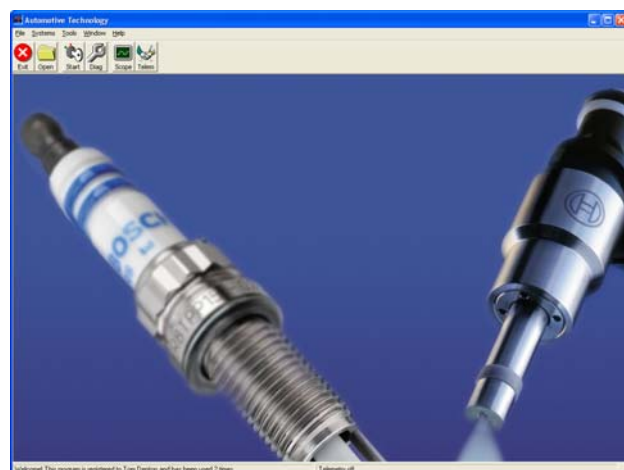
If you have any problems then please email me on: tom.denton@automotive-technology.co.uk

...and tell me exactly which stage in the above process you got to and any error messages that appeared.

It is also useful if I know what operating system you are using.

Thanks for your interest and support.

Tom Denton



To get started a quick scan through the help file is recommended but if you prefer, just start clicking things to see what happens...